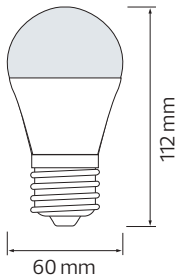


DIMMABLE LED BULB

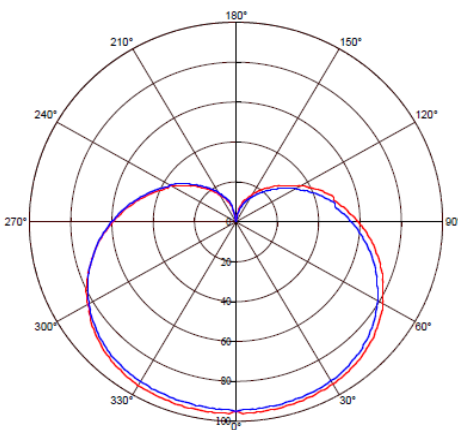
Product&Family Code: 001 021 0010

EXPERT-10


Technical Drawing

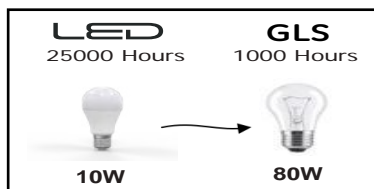


Photometric Diagram



C0 Plane beam angle(50%): 208.2(DEG) C90 Plane beam angle(50%): 207.1(DEG)

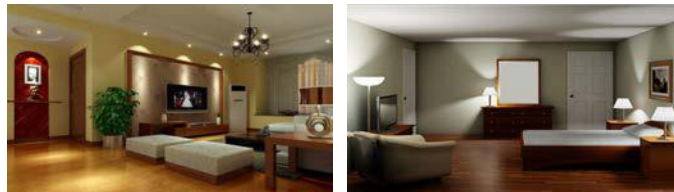
C0 Plane beam angle(50%): 208.2(DEG) C90 Plane beam angle(50%): 207.1(DEG)



Technical Data	
Voltage (V)	220-240V
Product Wattage (W)	10
Equivalence with incandescent lamp	80
Colour Render Index (Ra)	>Ra80
Colour Temperature (K)	3000K-4200K-6400K
Materials	Aluminium + PC
Protection Class	-
Dimmable	Yes
EEI	A+
Warm-up time up to 60 % of the full light output	Instant Full Light
Luminous Flux (lm)	900
Luminous Efficacy (lm/W)	90
Rated Life (hrs) ⌚	25,000
IP Rating	-
Power Factor	<0.5s
Beam Angle ☆	210 °
Starting Time	>0.5s
Number of ON-OFF cycling	>15,000

Applications

- For use with light dimmers, compatible with most dimmer switches, it is dimmable as well as Omni-directional, indoor lighting applications



Features

- Luminaire is dimmable.
- Dimmable from 100% to 10%. Our dimmable bulbs work with leading edge dimmers.
- Long life for reduced maintenance costs
- IR/UV-radiation free, Mercury free, Low heat emission

